

MONTHLY MEMBERSHIP PROGRESS REPORT

LOCATION REP OF BANGLADESH

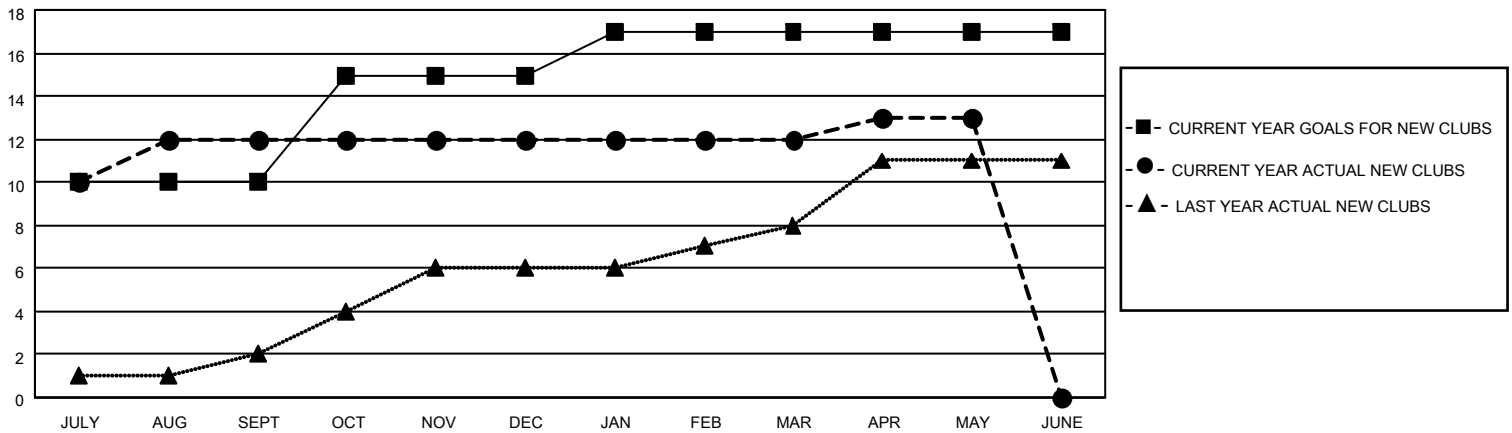
District 315A2

Results as of: 5/31/2022

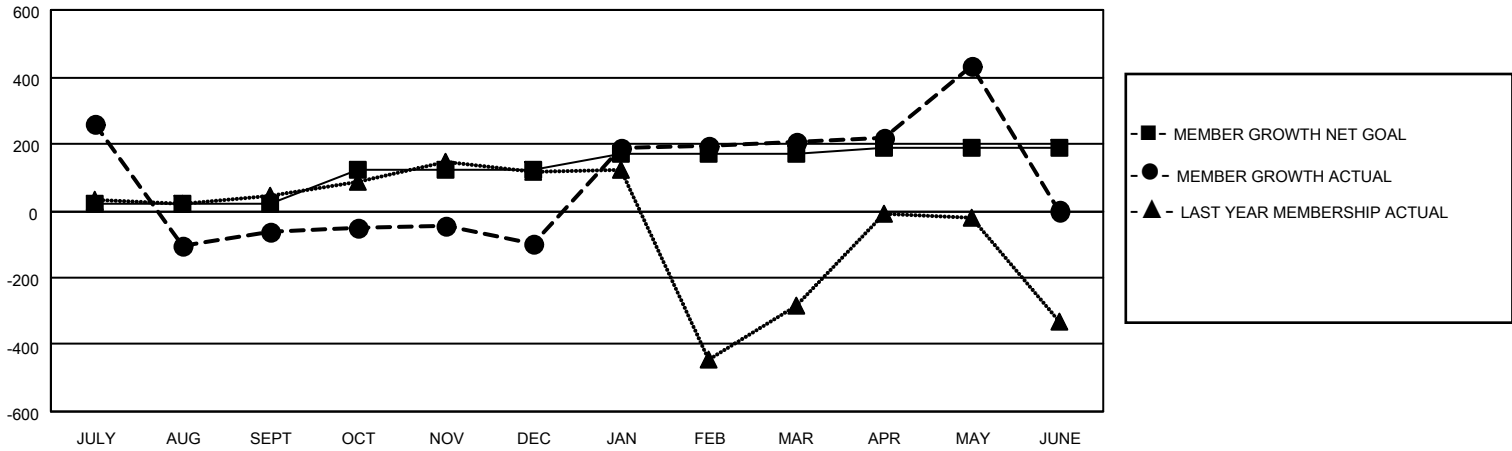
Clubs			
RESULTS FOR 2021-2022			
QUARTER	NEW CLUB GOAL	NEW CLUBS	DROPPED CLUBS
JULY/AUG/SEPT	10	12	26
OCT/NOV/DEC	5	0	1
JAN/FEB/MAR	2	0	0
APR/MAY/JUNE	0	1	0

Members			
RESULTS FOR 2021-2022			
QUARTER	MEMBER GROWTH NET GOAL	MEMBER GROWTH ACTUAL	DROPPED MEMBERS ACTUAL (including transfers)
JULY/AUG/SEPT	20	477	527
OCT/NOV/DEC	100	63	95
JAN/FEB/MAR	50	346	35
APR/MAY/JUNE	20	268	36

GOALS AND ACTUAL NEW CLUBS CUMULATIVE



GOALS AND ACTUAL MEMBERS CUMULATIVE



DROPPED CLUBS: 27

71 CLUBS OF 114 ADDED 1 OR MORE NEW MEMBERS

GENDER DISTRIBUTION

DROPPED MEMBERS

DECEASED	10
CLUB CANCELLED	431
OTHER	252
TOTAL	693

MALE	1,893 (69.65%)
FEMALE	825 (30.35%)
NON BINARY	0 (0.00%)
PREFER NOT TO ANSWER	0 (0.00%)

[CLICK HERE FOR CUMULATIVE MEMBERSHIP DATA](#)

TOTAL FAMILY UNIT MEMBERS	1,924
FAMILY MEMBERS PAYING HALF DUES	1,444